

DESIGNATION OF CELL LINE AND PRODUCT : MARE-1

IMMUNOGEN :

SUBSTANCE NAME : IgE (IR162, IR410) (1)
GENUS SPECIES : Rattus norvegicus - rat
STRAIN : LOU/C

IMMUNOCYTE DONOR :

GENUS SPECIES : Mus musculus - mouse
STRAIN : BALB/c

IMMORTAL CELL PARTNER :

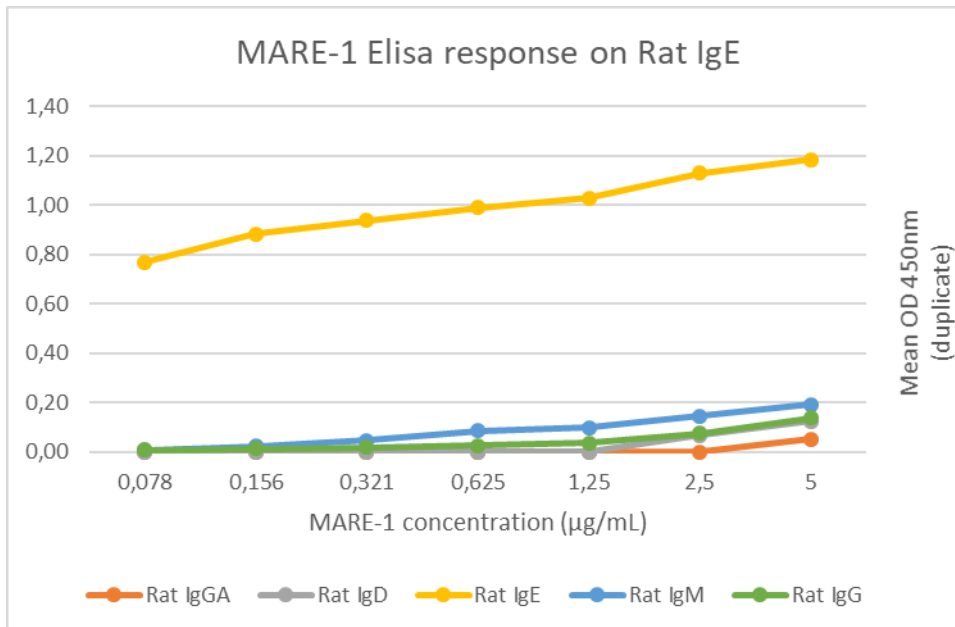
DESIGNATION : Sp2/O

HYBRIDOMA CELLS AND MONOCLONAL ANTIBODY :

CLASS OF ANTIBODY PRODUCED : Mouse kappa IgG1
NAME FOR CELL LINE : MARE-1 HYBRIDOMA
NAME FOR PRODUCT : MARE-1 MONO Ab
ICDB NUMBER : 3032636

REACTIVITY: Rat epsilon heavy chain of immunoglobulin (C epsilon 3) (4) (determined by immunodot)

SPECIFICITY ON ELISA:



- Detection antibody : MARE-1 Pure
- Secondary antibody : LO-MK-2-HRP

AVIDITY: On rat IgE: $4 \times 10^9 M^{-1}$ (Cf. avidity sheet, for more details).



APPLICATIONS : Cf REACTIVITY

- CAN BE USED AS SECOND ANTIBODY IN IMMUNOASSAYS (2,3,4,5,6)
- CAN BE LABELLED WITH IODINE (2,3), BIOTIN, FITC AND PEROXIDASE
- CAN BE USED FOR CAPTURE ELISA: GOOD BINDING ON PLASTICS
- CAN BE USED IN WESTERN BLOT ANALYSIS: binds to rat IgE in denaturated and non denaturated conditions.
- SUITABLE FOR DEGRANULATION OF RAT MAST CELLS (positive reaction in PCA)
- CAN BE USED IN IMMUNOAFFINITY CHROMATOGRAPHY for purification of Rat IgE (Solid phase Sepharose 4B CNBr act.)
- CAN BE COATED ON NITROCELLULOSE (DOT-ELISPOT)
- CAN BE USED ON CRYOSECTIONS (IMMUNOHISTOLOGY) AS FIRST ANTIBODY LABELLED WITH FITC

LYOPHILIZATION: Yes, with a possible low denaturation.

FORMAT AVAILABLE:

- Azide Free
- Endotox Free
- Custom labeling available on the full catalog or on request (Phycoerythrin, HRP, FITC, Alexa Fluor, ...)
- In cocktail with another antibody

REFERENCES :

- (1) Bazin H., Querinjean P., Beckers A., Heremans J.F. & Dessy F. Transplantable immunoglobulin-secreting tumours in rats. IV. Sixty-three IgE-secreting immunocytoma tumours. *Immunology* 1974, 26 : 713-723
- (2) Manouvriez P., Ravoet A.M. & Bazin H. Fc epsilon receptors on rat B- lymphocytes : specificity and binding kinetics. *Mol. Immunology* 1985, 22 : 1201-1208
- (3) Manouvriez P. & Bazin H. In vivo kinetics and nature of rat IgE- bearing lymphocytes after IgE stimulation. *J. Immunol.* 1984, 133 : 3274- 3281
- (4) Rousseaux-Prevost R., Rousseaux J., Bazin H. Studies of the IgE binding sites to rat mast cell receptor with proteolytic fragments and with a monoclonal antibody directed against epsilon heavy chain: evidence that the combining sites are located in the C epsilon 3 domain. *Molecular Immunology* 1987, 24, 187-196
- (5) Pluschke G. and Bordmann G. Isolation of rat immunoglobulin class switches variants of rat-mouse hybridomas by enzyme-linked immunosorbent assay and sequential sublining. *Eur. J. Immunol.* 1987, 17, 413-416 ;
- (6) Manouvriez P., Lefebvre M., Genart C., Cormont F. & Bazin H. Accurate determination of rat immunoglobulin isotype content in culture supernatants or media by Elisa with mouse monoclonal antibodies. *Immunobiology* 1986, 173, 307-308.
- (7) Manouvriez P. et al. *Ann. Inst. Pasteur*, 1985, 136C : 187-193
- (8) Rousseaux-Prevost R., et al. *Mol. Immunol.*, 1987, 24 : 187-196
- (9) Vanhove B., Bazin H. *Mol. Immunology*, 1992, 29 : 1-8
- (10) Vanhove B., Bazin H. *Immunology* 1993, 79 : 580-586
- (11) Yamada M., et al. *Immunology* 1993, 78 : 298-302
- (12) Soares et al., *Transplant. Proc.* 1995, 27 : 282-285
- (13) Lima M.C. et al. *J. Leukoc. Biol.* 1997, 61 : 286-292.
- (14) Studies on the mechanisms involved in antigen-evoked pleural inflammation in rats : contribution of IgE and complement. (In *Journal of Leukocyte Biology* on 1 March 1997 by Lima, M. C., Prouvost-Danon, A., et al.)
- (15) Characterisation of rat anti-guinea pig circulating xenoreactive natural antibodies and secreting cells. (In *Transplantation Proceedings* on 1 February 1995 by Soares, M., Havaux, X., et al.)
- (16) Differentiation of membrane IgE+ rat B cells into IgE-secreting cells. (In *Immunology* on 1 August 1993 by Vanhove, B. & Bazin, H.)
- (17) IgE and IgG2a antibody responses are induced by different antigen groups of the nematode *Nippostrongylus brasiliensis* in rats. (In *Immunology* on 1 February 1993 by Yamada, M., Nakazawa, M., et al.)
- (18) IgG2b or IgE molecules can be co-expressed with those of the IgM and IgD isotypes of the membrane of normal rat B cells. (In *Molecular Immunology* on 1 January 1992 by Vanhove, B. & Bazin, H.)
- (19) Studies of the IgE binding sites to rat mast cell receptor with proteolytic fragments and with a monoclonal antibody directed against epsilon heavy chain: evidence that the combining sites are located in the C epsilon 3 domain. (In *Molecular Immunology* on 1 February 1987 by Rousseaux-Prévost, R., Rousseaux, J., et al.)
- (20) *Nippostrongylus brasiliensis* infection can induce IgE production in rnu/rnu rats. (In *Annales De L'Institut Pasteur. Immunology* on 1 March 1985 by Manouvriez, P., Cormont, F., et al.)

For more information, see: "Rat Hybridomas and Rat Monoclonal Antibodies". H. BAZIN (Ed.), CRC Press, Boca Raton, Florida, USA, 1990, 515 pages.

FOR RESEARCH ONLY

SynAbs s.a., Monoclonal Antibody Manufacturing Center – www.synabs.be
48, Rue Auguste Piccard, ITech Incubator 2, Aile Piccard +1, B-6041, Gosselies, Belgium .
VAT registration BE 0637.716.206 - Bank account : Belfius, BE72 0689 0305 9216
Tel. +32 470/89.56.18 or +32 71/37.48.80